



Now you can.

TOTALJOIST

**UP TO 6 STOREY WOOD CONSTRUCTION.
BUILD BETTER AND REDUCE RISK.**

- Eliminates shrinkage and swelling
- Pre-cut service holes
- No more unsightly & costly bulkheads
- Fast track construction schedule
- Unmatched clear span capabilities
- Trade friendly, saves time & errors
- Made with 90% recycled material
- Simplified fire ratings
- High acoustic ratings
- Increase job profitability

SIMPLIFYING FLOOR DESIGN & CONSTRUCTION

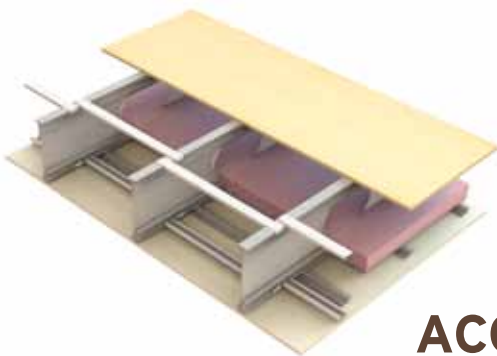
PRE-CUT SERVICE HOLES

- No more unsightly and costly bulkheads
- Increase ceiling height and architectural appeal
- Reduce trade scheduling
- Trade friendly, save time & errors
- Holes co-ordinated to match services in BIM



THE SIMPLEST 1 HR FIRE RATED ASSEMBLY

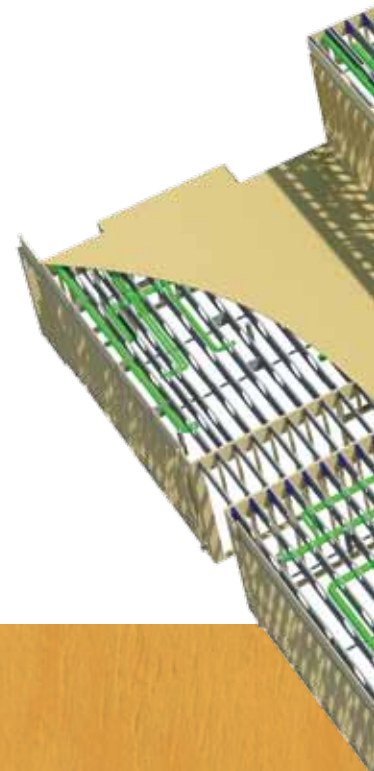
Achieve a UL/ULC 1 hour fire rating with wood sheathing, only 1 layer of drywall, fiberglass insulation, and mechanical penetrations.



ULC Design M521 / UL Design M515
contact iSPAN for additional listings

ACOUSTIC PROVEN

- Only floor assembly with wood sheathing to achieve STC 50 with only one layer of drywall
- STC 63 with 1-1/2" gypcrete topping
- Lab tested and over 40 field tests



WOOD FRAMING

INCREASED QUALITY FLOOR

FAST TRACK CONSTRUCTION SCHEDULE WITH MULTI-TRADE CO-ORDINATION

No more waiting until building is watertight and drywall is complete to run services. Start mechanical as soon as framing on floor is complete.

- Save weeks off construction schedule
- Speed up closing times
- Get revenue faster!

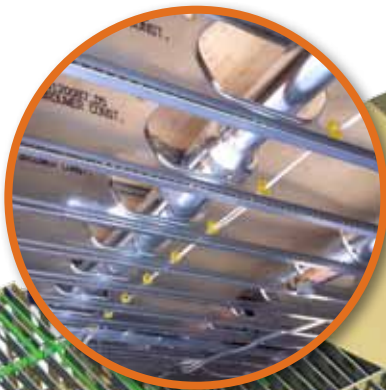
Installing Roof Joists



Running Services in Floor Assembly



Mechanical Rough-in Complete



ROOF LEVEL

3RD FLOOR LEVEL

1ST FLOOR LEVEL

2ND FLOOR LEVEL

MULTIPLE TRADES WORKING IN CONJUNCTION

Ceilings Ready for Drywall



TOTALJOIST

SPAN TABLE



40 psf Live Load, L/480 Live Load Deflection Limit Residential Loading, Vibration Controlled

| Joist Depth | iSPAN® Joist | UNTOPPED | | | | 1 -1/2" GYPCRETE TOPPING | | | |
|-------------|--------------|-------------------------------------|---------|-----------|---------|---------------------------------------|---------|-----------|---------|
| | | 40 psf Live Load / 25 psf Dead Load | | | | 40 psf Live Load / 37.5 psf Dead Load | | | |
| | | 12" o.c | 16" o.c | 19.2" o.c | 24" o.c | 12" o.c | 16" o.c | 19.2" o.c | 24" o.c |
| 9-1/2" | 9.5-i-2 | 20' 4" | 18' 6" | 17' 4" | 15' 11" | 20' 4" | 18' 6" | 17' 4" | 15' 11" |
| | 9.5-i-3 | 21' 9" | 20' 1" | 18' 9" | 17' 3" | 21' 9" | 20' 1" | 18' 9" | 17' 3" |
| | 9.5-i-4 | 23' 2" | 21' 7" | 20' 3" | 18' 8" | 23' 2" | 21' 7" | 20' 3" | 18' 8" |
| 11-7/8" | 11.875-i-2 | 24' 4" | 22' 4" | 20' 11" | 19' 3" | 24' 4" | 22' 4" | 20' 11" | 19' 3" |
| | 11.875-i-3 | 26' 0" | 24' 2" | 22' 8" | 20' 11" | 26' 0" | 24' 2" | 22' 8" | 20' 11" |
| | 11.875-i-4 | 27' 8" | 25' 10" | 24' 6" | 22' 7" | 27' 8" | 25' 10" | 24' 6" | 22' 7" |
| 14" | 14-i-2 | 27' 8" | 25' 7" | 24' 0" | 22' 1" | 27' 8" | 25' 7" | 24' 0" | 22' 1" |
| | 14-i-3 | 29' 5" | 27' 5" | 25' 11" | 23' 11" | 29' 5" | 27' 5" | 25' 11" | 23' 11" |
| | 14-i-4 | 31' 0" | 28' 10" | 27' 8" | 25' 11" | 31' 0" | 28' 10" | 27' 8" | 25' 11" |
| 16" | 16-i-2 | 30' 6" | 28' 6" | 26' 9" | 24' 8" | 30' 6" | 28' 6" | 26' 9" | 24' 8" |
| | 16-i-3 | 32' 2" | 30' 1" | 28' 9" | 26' 9" | 32' 2" | 30' 1" | 28' 9" | 26' 9" |
| | 16-i-4 | 33' 11" | 31' 8" | 30' 3" | 28' 8" | 33' 11" | 31' 8" | 30' 3" | 28' 8" |

- Notes**
- Spans are controlled by strength and serviceability, including VIBRATION CONTROL, see TotalJoist Tech Guide for clarification.
 - Span charts are provided for general information and should not be used for design and / or installation.
 - Spans in orange areas indicate optimal joist pricing, plywood can be nailed down to joist.
 - Unshaded areas are heavier material typically used for girders, sheeting must be screwed down to joist.



iSPAN SYSTEMS LP
 70 Brentwood Drive, P.O. BOX 442
 Princeton, Ontario, Canada N0J 1V0
T 519-458-4222 **F** 519-458-4460
www.iSPANsystems.com

